



The Zorlu Center is a modern masterpiece and Istanbul's most exclusive project.

### Conception

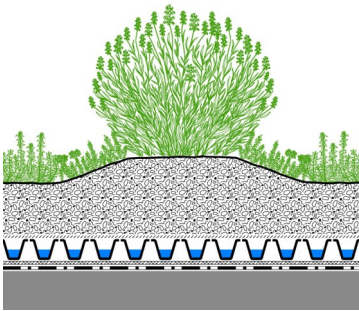
In the heart of Istanbul, at the crossroads between Europe and Asia, a new lifestyle site has been created.

The Zorlu Center is the result of the cooperation of two award-winning architect teams. This is the first mixed-use project in Turkey which meets five different functions. The four towers accommodate a hotel belonging to the luxury chain "Raffles", exceptional office space with private

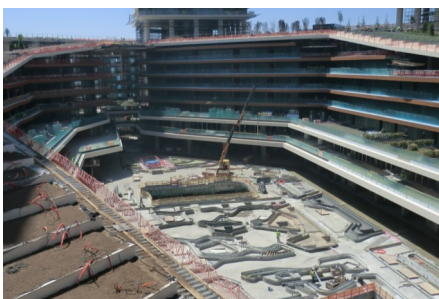
terraces and residences for discerning families. Furthermore, the Zorlu Center houses a musical theatre for 2,300 guests, a shopping mall with about 180 stores arranged around a 10,000 m<sup>2</sup> large main square.

A five-story parking garage is located in the basement as well as an underground pedestrian tunnel connecting the Zorlu Center with public transportation.

### System Build-up



- Vegetation according to plant list
- System substrate in different depths
- Filter Sheet SF
- Floradrain® FD 40-E
- Protection Mat ISM 50
- Roof construction with root resistant waterproofing



The intensive green areas with their shrubs and trees as well as the paved zones of the courtyard were all realized based on the Floradrain® FD 40-E drainage element, whereas the extensive green roof of the theatre is based on Floradrain® FD 25-E.



More than 200 different plant species, including 68 species of trees were planted on top and around the Zorlu Center.



The installation of the planting and pedestrian areas and watercourses started while the construction works on the Zorlu Center were still running. The main square is connected directly to the underground parking decks and the public transport via escalators.

